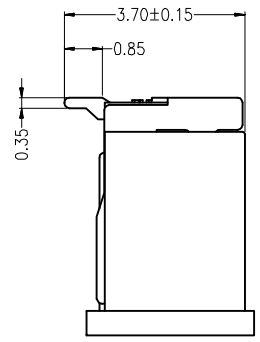
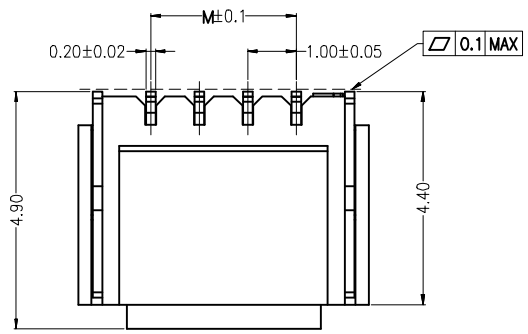
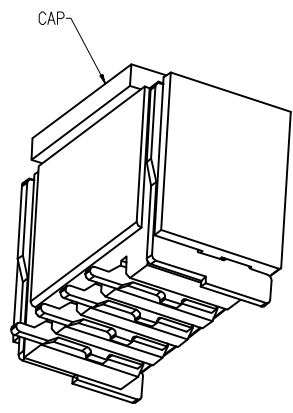
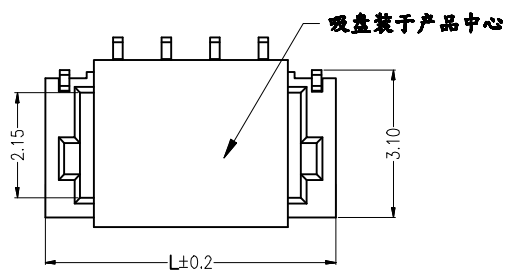


1 2 3 4 5 6 7 8 9

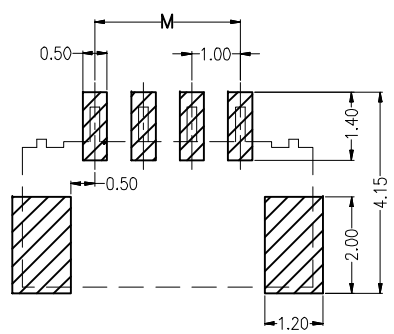
F
E
D
C
B
A



Specifications:
 Current rating:1A AC/DC.
 Voltage rating:50V AC/DC
 Temperature range:-40°C~+105°C.
 Contact resistance:20mΩ Max.
 Insulation resistance:100MΩ Min.
 Withstanding voltage: 500V AC/minute.



| No of pins/row | Dimensions | |
|----------------|------------|-------|
| | M | L |
| 02 | 1.00 | 4.00 |
| 03 | 2.00 | 5.00 |
| 04 | 3.00 | 6.00 |
| 05 | 4.00 | 7.00 |
| 06 | 5.00 | 8.00 |
| 07 | 6.00 | 9.00 |
| 08 | 7.00 | 10.00 |
| 09 | 8.00 | 11.00 |
| 10 | 9.00 | 12.00 |
| 11 | 10.00 | 13.00 |
| 12 | 11.00 | 14.00 |
| 13 | 12.00 | 15.00 |
| 14 | 13.00 | 16.00 |
| 15 | 14.00 | 17.00 |
| 16 | 15.00 | 18.00 |



P.C.B LAYOUT

G WCC105 - XX XX A 001 C X B X

No. of Pins per Row 2~16 Standard Plating 22=Matte Tin Selective Plating 01=Tin 02=Gold flash

Color 1=Black 2=White Standard Packing F= CAP+Tape&Reel

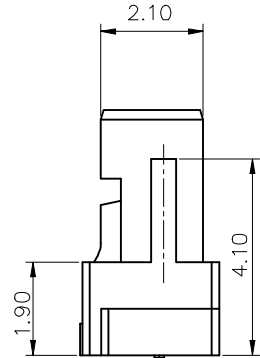
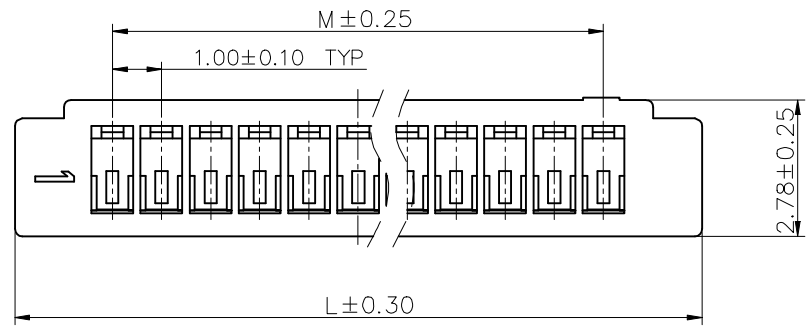
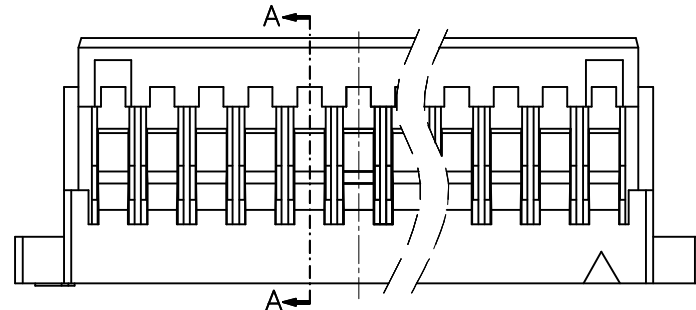
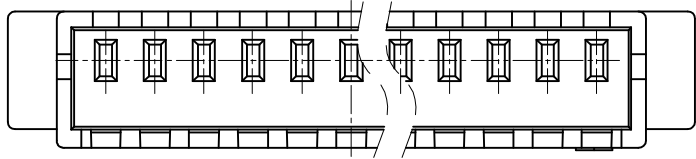
格稜股份有限公司
Greenconn Corporation

| | | | | | | | | | | | | |
|-----------|-------------|---------------|--------------|-------------------|------------|---------|-------|---------------------------|---------------------------------|-----------|-------|----------------------------------|
| REV. A | UNIT. mm | SCALE. 1:1 | PAGE. 1/1 | GENERAL TOLERANCE | | DESIGN: | DATE: | DWG. NO. GWCC105-CA1CB | TITLE. 1.00mm pitch 180° SMT | | | |
| | | | | X: ±/ | X: ±/ | | | | | | | |
| | | | | .X' ±/ | .X ±0.25 | | | | | CHECKED: | DATE: | PART NO. GWCC105-XXXXA001CXBX |
| | | | | .XX' ±/ | .XX ±0.20 | | | | | APPROVED: | DATE: | |
| | | | | .XXX' ±/ | .XXX ±0.15 | | | | | | | |

1 2 3 4 5 6 7 8 9

1 2 3 4 5 6 7 8 9

F
E
D
C
B
A



Specifications:
 Current rating: 1A AC/DC.
 Voltage rating: 50V AC/DC
 Temperature range: -40°C~+105°C.
 Contact resistance: 20mΩ Max.
 Insulation resistance: 100MΩ Min.
 Withstanding voltage: 500V AC/minute.
 Material: PA66.UL94V-0.

| NO OF PINS/ROW | Dimensions | |
|----------------|------------|-------|
| | L | M |
| 02 | 5.00 | 1.00 |
| 03 | 6.00 | 2.00 |
| 04 | 7.00 | 3.00 |
| 05 | 8.00 | 4.00 |
| 06 | 9.00 | 5.00 |
| 07 | 10.00 | 6.00 |
| 08 | 11.00 | 7.00 |
| 09 | 12.00 | 8.00 |
| 10 | 13.00 | 9.00 |
| 11 | 14.00 | 10.00 |
| 12 | 15.00 | 11.00 |
| 13 | 16.00 | 12.00 |
| 14 | 17.00 | 13.00 |
| 15 | 18.00 | 14.00 |
| 16 | 19.00 | 15.00 |

GHC371 - XX A X

No. of Pin/Row
02 ~ 16

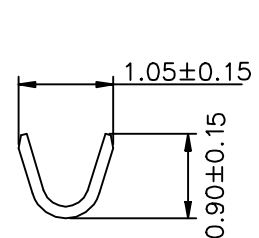
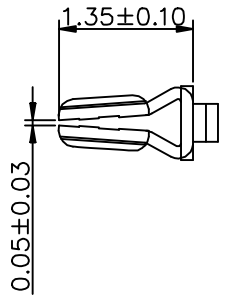
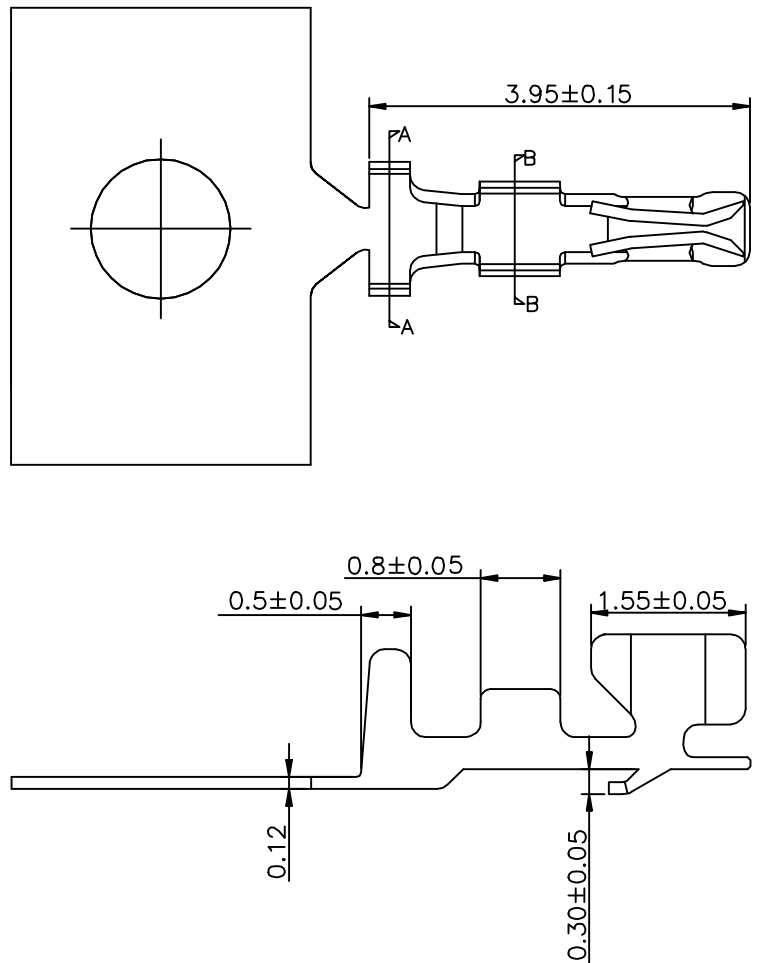
Material/Color
M=NYLON66/White
M1=NYLON66/Black
NF=NYLON66/Transparent

| | | | | | | | |
|---|---------------|-------------------|---------------------|-----------|-------|-------------|-----------------------------|
| Website: www.greenconn.com E-mail: sales@greenconn.com | 3RD.ANG PROJ. | GENERAL TOLERANCE | | DESIGNED: | DATE: | DWG. NO. | TITLE. |
| | PAGE. 1/1 | X. 停 / X. ? | X. ? .30 | CHECKED: | DATE: | GHC371-HA | |
| REV. A | UNIT. mm | SCALE. 1:1 | .XX 停 / .XX ? .20 | APPROVED: | DATE: | PART NO. | 1.00mm Pitch Housing |
| | | | .XXX 停 / .XXX ? .15 | | | GHC371-XXAX | |

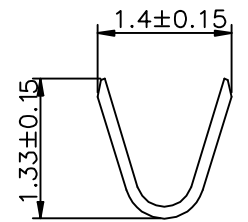
1 2 3 4 5 6 7 8 9

1 2 3 4 5 6 7 8 9

F
E
D
C
B
A



SECTION: B-B



SECTION: A-A

Specifications:
Terminal Material: Phosphor Bronze
Wire range: AWG#28-32
Insulation O. D: 0.80mm(Max)
Qty/Reel: 20000PCS

Ordering Information

GRC113 - 01 XX AB

Standard Plating
 01=Tin
 02=Gold flash

Materials
 AB=Phosphor Bronze

| | | | | | | | |
|---|-------------------|---------------------|-----------|-----------|-----------------|-----------|-----------------------------|
| Website: www.greenconn.com E-mail: sales@greenconn.com | 3RD.ANG PROJ. | GENERAL TOLERANCE | | DESIGNED: | DATE: | DWG. NO. | TITLE. |
| | PAGE. 1/1 | X. 停 / X. ? | X. ? | CHECKED: | DATE: | GRC113-T1 | 1.0mm Pitch Terminal |
| REV. A | .XX 停 / .XX ? .20 | .XX ? .20 | APPROVED: | DATE: | PART NO. | | |
| UNIT. mm | SCALE. 1:1 | .XXX 停 / .XXX ? .15 | | | GRC113-01 XX AB | | |

1 2 3 4 5 6 7 8 9